

This issue is dedicated to the customized FluorCams:

Large Customized Imaging Systems

for

Multispectral Kinetic Fluorescence Imaging

NEW



XY-Plane FluorCam

KEY FEATURES:

- Large imaged areas
- Optimized for **high-throughput screening**
- Super pulse up to **7,500 $\mu\text{mol}(\text{photons})/\text{m}^2.\text{s}$**
- Actinic light up to **3,000 $\mu\text{mol}(\text{photons})/\text{m}^2.\text{s}$**
- **GFP measurements capability**
- Movable frames allowing flexible viewing angles
- Solid and stable construction for field and lab use
- Safe to samples: no leaf detaching or plant destroying

NEW



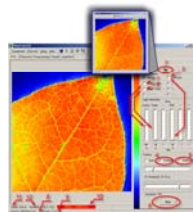
Rover FluorCam

EXPERIMENTS AND MEASURED PARAMETERS:

- Quenching
- Kautsky induction
- QA reoxidation
- OJIP
- Fast fluorescence induction with $1\mu\text{s}$ resolution
- PAR absorptivity
- Measured parameters: F_0 , F_M , F_V , F_0' , F_M' , F_V' , $QY(II)$
- More than 50 calculated parameters



Arch FluorCam



NEW FLUORCAM 7.0 SOFTWARE

- Automated experimental protocols via an integrated Wizard
- Kinetic analysis of data from all samples within the field of view
- Numerous image manipulation tools
- Multiple (automatically repeated) experiments
- Automated labeling of individual plants or samples within the field of view
- Barcode reader support

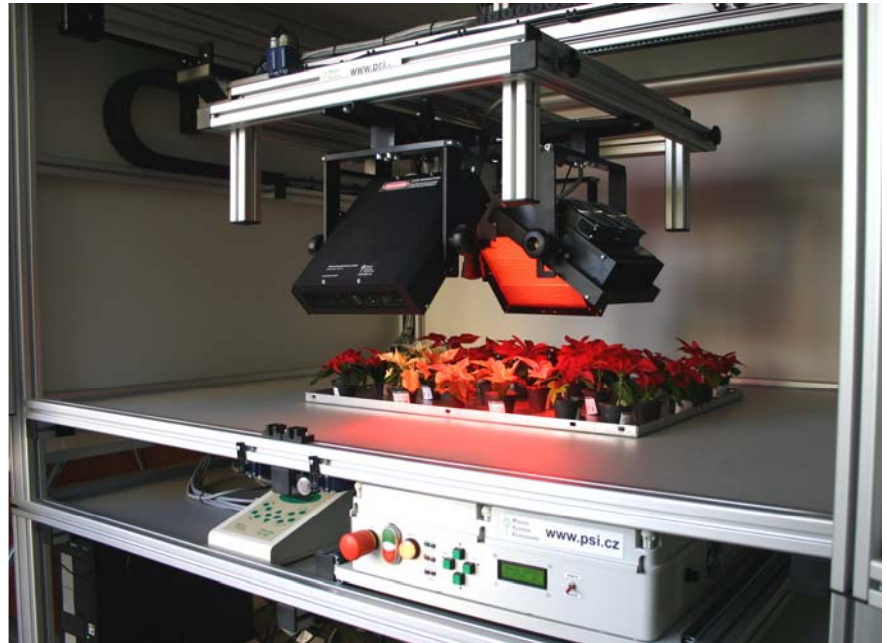


Transect FluorCam

XY-Plane FluorCam

NEW

- Optimized for high-throughput screening
- Perfect for lab analysis of multiple samples in large growth trays
- Great in stress studies, GMOs screening or multi-spectral analysis
- Measured area 80 x 40 cm
- Robust, user-friendly construction
- Robotized system of variable-height light sources and camera
- No need to detach or move samples



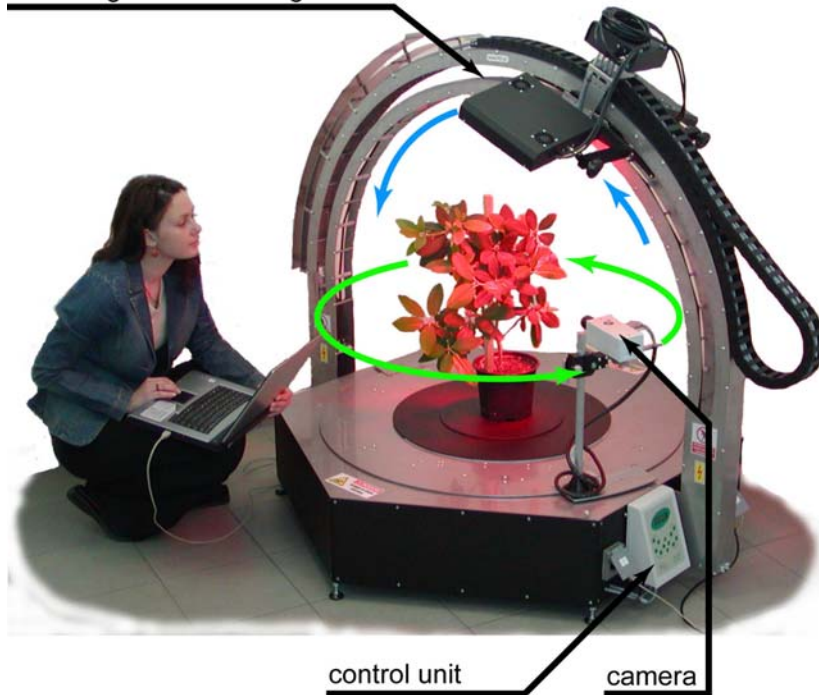
Rover FluorCam

NEW

- Ideal for large-scale field scanning
- Measured area 20 x 20 cm
- Robust and stable construction with sturdy wheels for easy movement over rough terrain
- Equipped with a cabinet for dark adaptation of samples
- Height adjustment from 20 to 150 cm
- No sample detaching or destroying



actinic light & measuring flashes

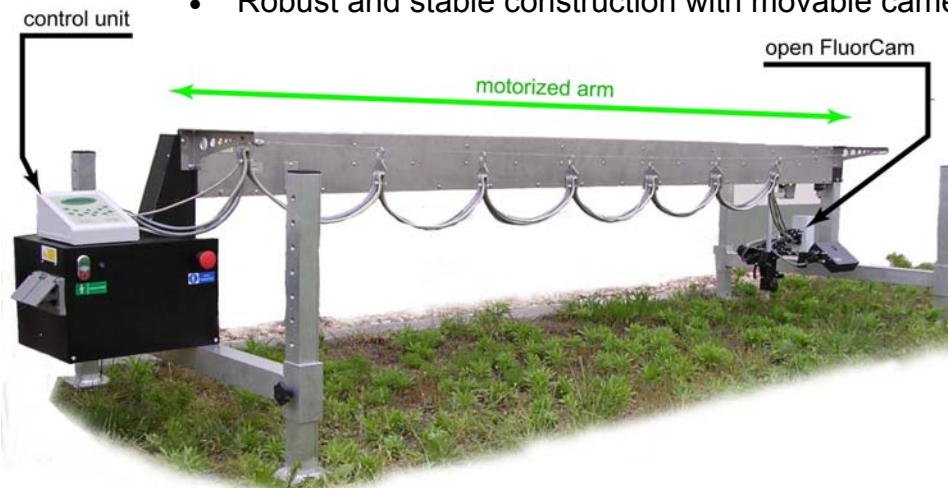


Arch FluorCam

- Great for three dimensional imaging
- Robust and stable stand
- Flexible light positioning frame
- Movable camera enabling observations from all sides
- No need to detach or move samples
- Software for generation of 3-D images

Transect FluorCam

- Perfect for high-throughput screening
- Both outdoor and greenhouse large scale screening or monitoring plants affected by stress gradient
- Standard measured area 100 x 200 cm can be adapted to different size
- Robust and stable construction with movable camera and light sources



PSI (Photon Systems Instruments), spol. s r.o.
Drasov 470, 664 24 Drasov, Czech Republic
www.psi.cz