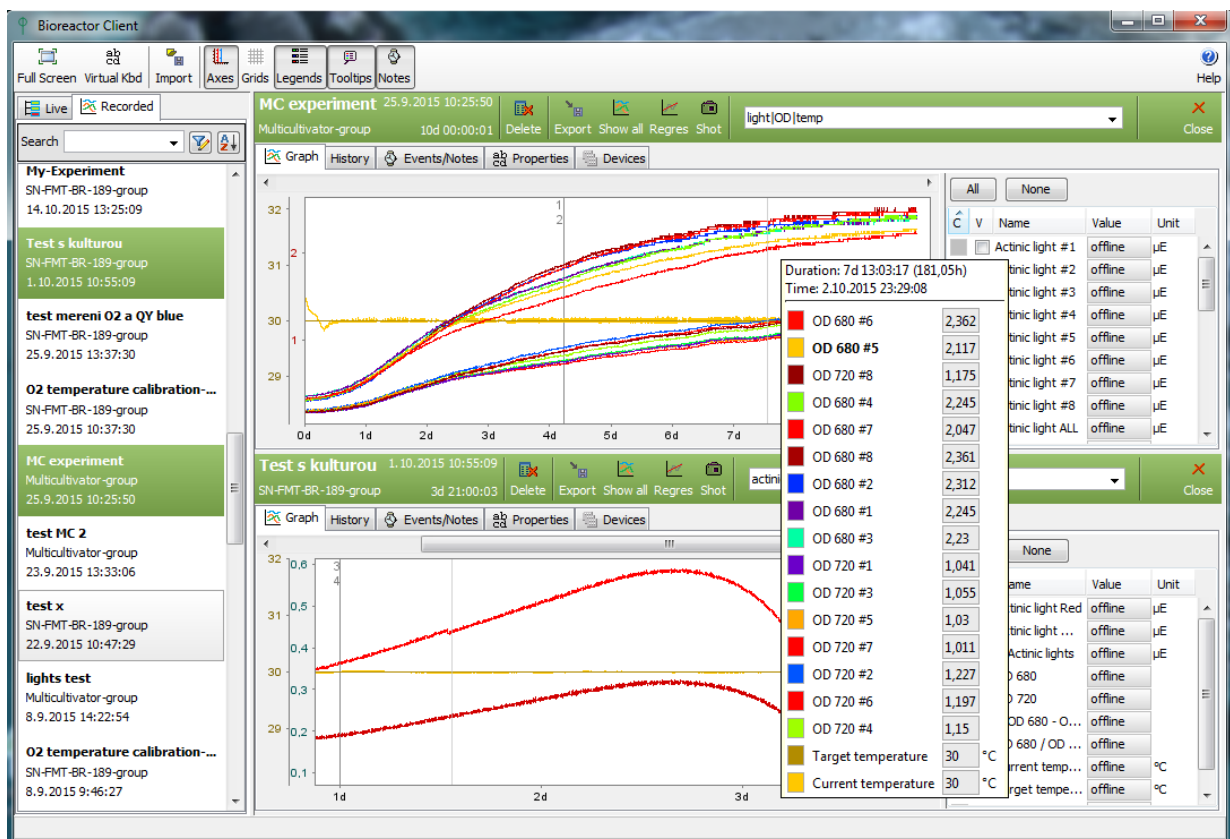


## Welcome to Issue 22 of the PSI NEWS

This issue is dedicated to:

# NEW Multi-Cultivator Software



PSI is introducing a new control software for Multi-Cultivator MC 1000-OD. The new software provides intuitive and dynamic interface for remote online visualization of recorded data in real-time. Full control of light regime (intensity, duration and mode) for each individual cultivation tube is available. Custom cultivation protocols can be programmed. In addition, storing data into database is implemented, including intelligent searching in the database and user-friendly multiple experiment export function into MS Excel or OpenOffice. Advanced data analysis functions are integrated for complex regression analysis and dynamic real-time calculation of growth rates for defined periods are possible.

The newly released MC 1000-OD software is available in two versions: Basic and Advanced. The advanced version is optimized for simultaneous control of different and multiple cultivation devices such as Multi-Cultivators as well as Photobioreactors from one PC. Software controlled communication with additional devices such as Gas Mixing System GMS-150 is also supported.

### Key Software Features:

- Full control (setting and editing) **of experimental conditions** (lights, temperature)
- **Real time monitoring of biomass** growth via changes in OD at two wavelengths (680, 720 nm)
- **Real-time regression analysis** of growth rates
- **Storage of data** in a database
- Multiple **data handling** functions (filtering, searching, multiple export)
- **On-line changes** to protocols recorded in protocol history

#### Basic Version Contains:

- User friendly GUI, clear graph tooltips, legend panels
- Complex regression analysis and real-time growth rates calculation
- Set up of custom cultivation protocols
- Change in protocol of running experiment and restoration after laptop reboot
- Export of the experiments to MS Excel/OpenOffice
- Recorded experiments filtering
- Online software upgrades
- Licence for 2 MC-1000 devices

#### Advanced Version Contains:

- All features of the Basic editions
- Support for Gas Mixing System GMS 150
- Scripting support in protocol (custom protocols)
- Scheduling of the experimental start
- E-mail notifications
- Unlimited multi-licence

For purchase of the software and to obtain additional information, please contact PSI at [info@psi.cz](mailto:info@psi.cz) or visit our website at <http://psi.cz/products/photobioreactors/>